

## Alien DVR Mobile Client

### Requirements

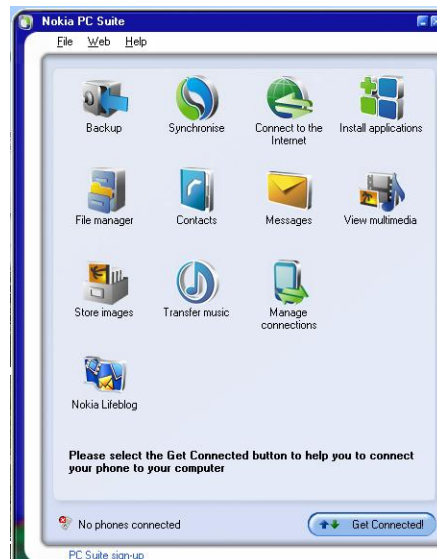
The Alien DVR mobile client requires a JAVA 2 compatible Internet enabled mobile device such as the Nokia™ N95.

### Installation

The mobile client software needs to be installed on your mobile device before use. Please refer to your phone's or mobile device's instruction manual for information on how to perform this task.

When installing to a Nokia device such as the N95, installation can be achieved via the "Nokia PC Suite" software as outlined below.

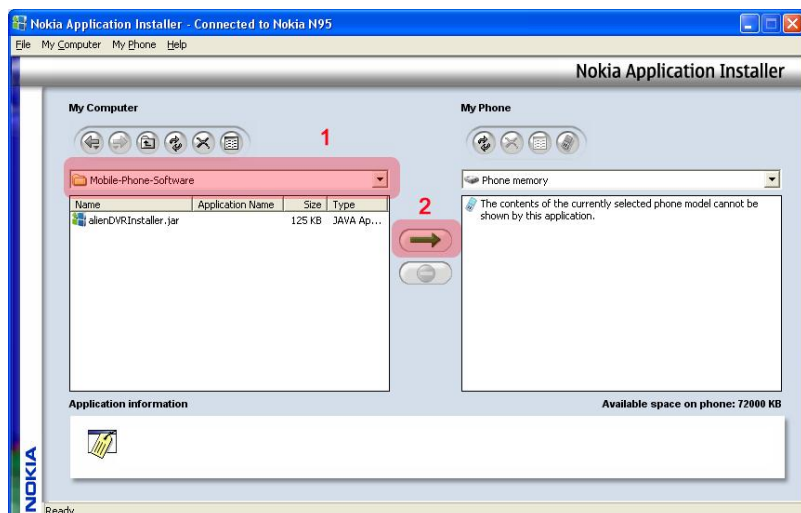
Firstly launch the Nokia PC Suite and click on "Install Applications"



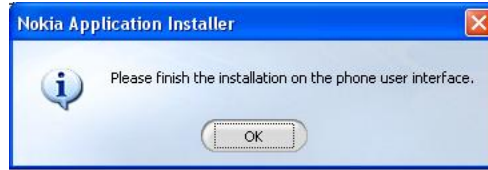
1. Click on the 'Navigator' and navigate to the folder containing the file 'alienDVRInstaller.jar'

Ensure that 'Phone Memory' is selected.

2. Click on the 'Install' arrow to send the file to the mobile device

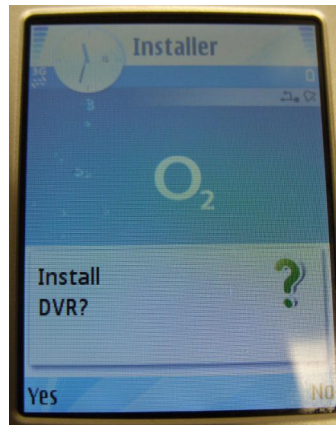


After the file has been transmitted to the mobile, application installation continues at the mobile device.



At the mobile device...

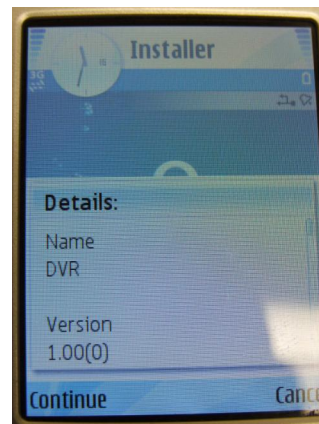
When prompted to install the software, select 'Yes'



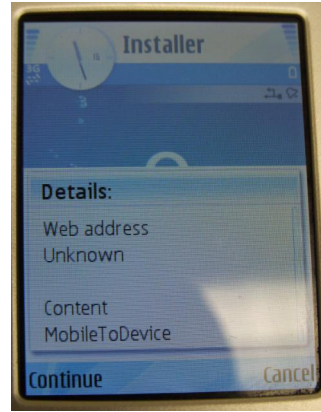
When prompted with a security warning, select 'Continue'



An information screen appears, select 'Continue'



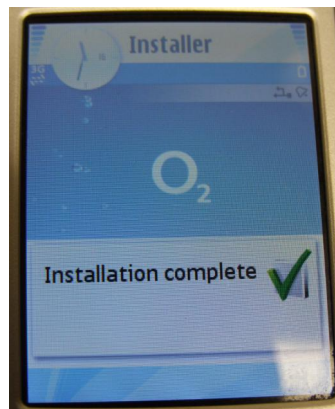
A second information screen appears, select 'Continue'



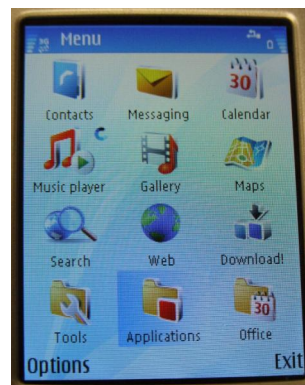
A progress indicator appears



Wait for installation to complete



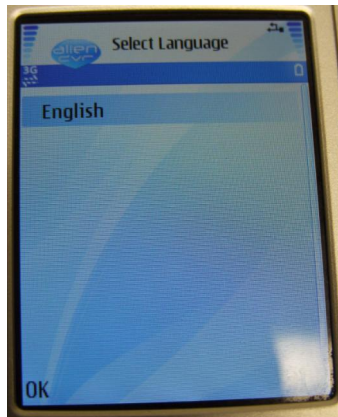
When installation finishes, you need to configure the DVR application, navigate to & select 'Applications'



Then select the DVR application



The first dialog identifies the default language, currently there is only one, English, so select OK



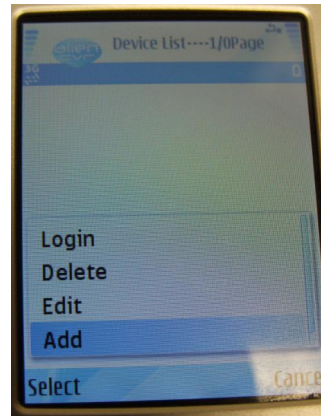
The alienDVR logo appears, select 'Options'



Select 'Browse Device'



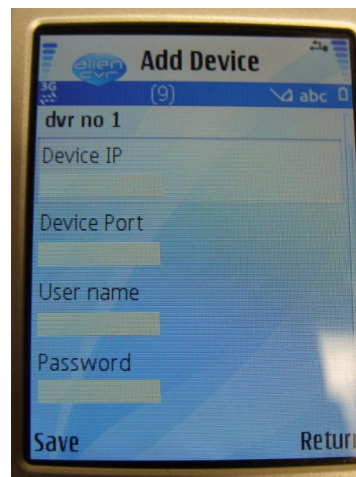
At this point, no devices exist so select, 'Add'



Enter the Device's name, IP address, TCP port number, and username & password needed to log onto the DVR, then select 'Save'.

*Caution : Have you changed the username / password at the DVR from the defaults ?*

*Suggestion : Create new username / password in the DVR for remote connections.*



- - - End of Document - - -